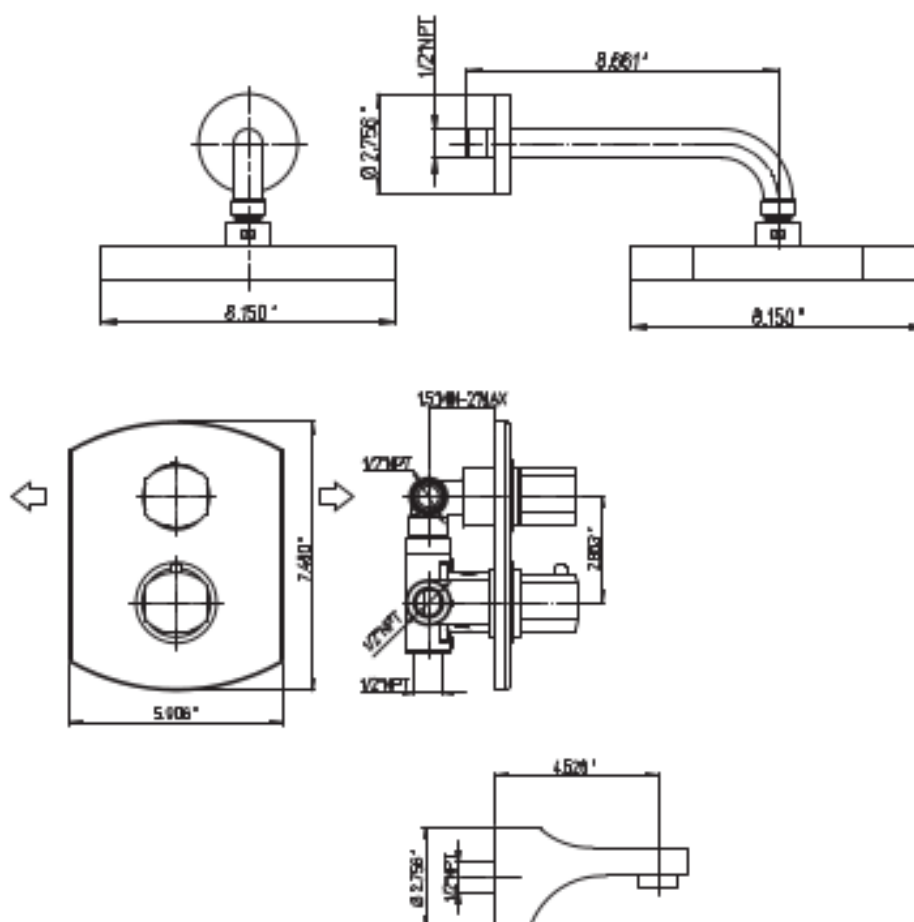


# 86-691



Novello thermostatic valve with  
2-way diverter volume control  
1/2" inlet connections



## Novello Series

86-691

Thermostatic Valve,  
Contemporary Styling

### STANDARDS

- Compliant with ASME A112.18.1-B125.1
- Compliant with AB1953
- Compliant with ANSI NSF61 – Annex G
- Certified by CSA International
- Compliant with ANSI A117.1

### Finishes

|                 | 86CR691 | 86PW691 |
|-----------------|---------|---------|
| Polished Chrome | X       |         |
| Brushed Nickel  |         | X       |

### Features

|  | 86CR691 | 86PW691 |
|--|---------|---------|
| Solid Brass Construction                             | X       | X       |
| Extra Bottom Exit To Add Extra Volume Control        | X       | X       |
| Independent Temperature Control                      | X       | X       |
| Thermostatic Cartridge                               | X       | X       |
| 2-Way Diverter Valve With Progressive Volume Control | X       | X       |
| Step-By-Step Installation Instructions               | X       | X       |
| 8.82 GPM   | X       | X       |

1-866-668-6690  
1571 MAIN RD  
NEWFIELD, NJ 08344

[www.paini-usa.com](http://www.paini-usa.com)